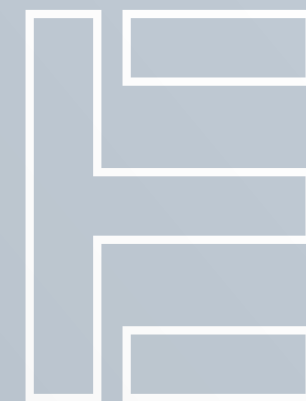




Functions at Exchange

LEVEL 8, 2 THE ESPLANADE, PERTH





Welcome.

Inviting and inspiring.

The Exchange Tower Function Centre is an advanced business-life environment inspiring success. Book the space to collaborate, meet, brainstorm, focus, celebrate, incubate, challenge, host and inspire.

The space is ideal for conferences, functions, cocktail events, video-conferences, teleconferences, solo work, one-on-one meetings and training sessions. Tailored packages are available to meet your exact business and individual needs with extensive catering options on offer.



Functional zones.



The function centre has a number of zones that can be configured based on your event and meeting requirements, plus a fully equipped kitchen for your use.

LOUNGE ZONE

An elastic space with views of The Swan that can be booked in conjunction with another zone.

- Lounge chairs
- Coffee tables
- Food and beverage hosting

BOARDROOM ZONE

12 seat board table with multi configuration options and a view of The Swan.

- Videoconference
- Teleconference
- Audio

CONFERENCE/TRAINING ZONE

54 seat capacity with multi configuration options.

- Presentation screen
- TV
- Lectern
- Lapel microphone
- Handheld microphone
- Audio

OPEN ZONE

114 capacity with configurations to suit conferences, events and training.

- Two presentation screens
- Audio

KITCHEN FACILITIES

Fully equipped kitchen.

- Hot water urn
- Cups, saucers and side plates
- Teaspoons
- Water glasses
- Water jugs
- Microwave
- Water cooler
- Refrigerator
- Dishwasher
- Oven



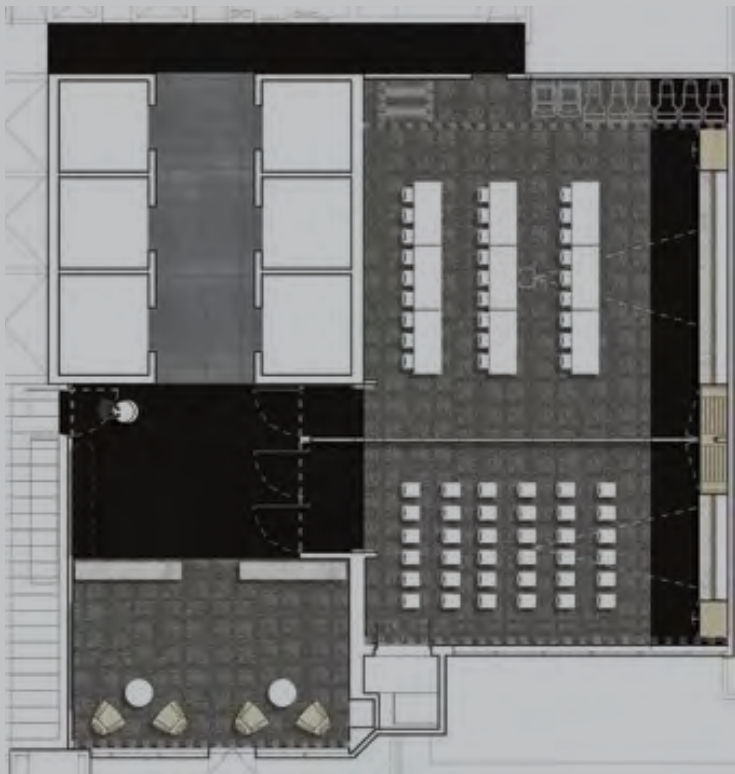
Configuration options



Layout options tailored to your needs.

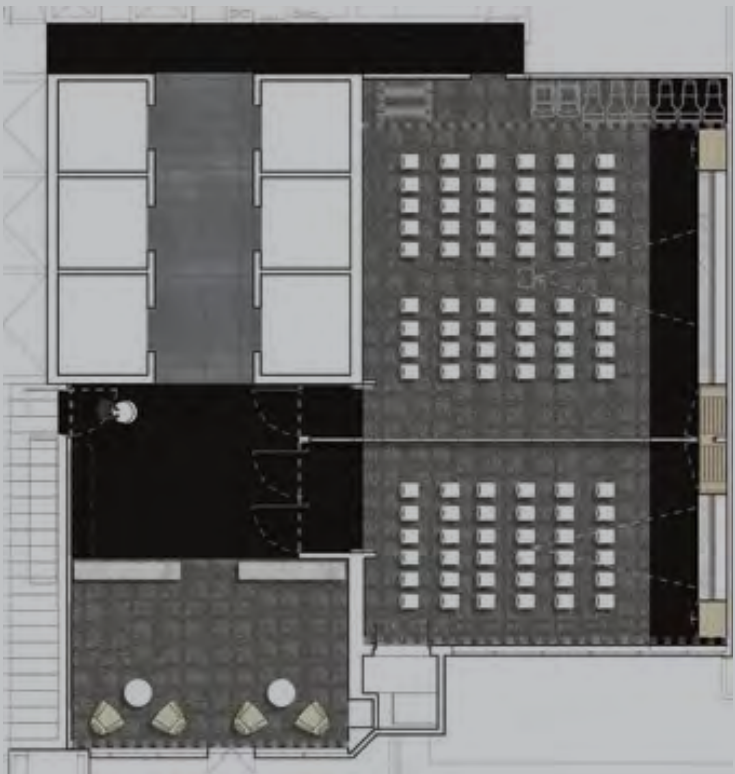
The Exchange Tower's function layout examples shown illustrate the versatility of the space. With a standing capacity of 150 people, the space can also hold a maximum of 12 tables (1800mm x 900mm), allowing the room arrangements to be adapted to suit any of your requirements.

Configuration options



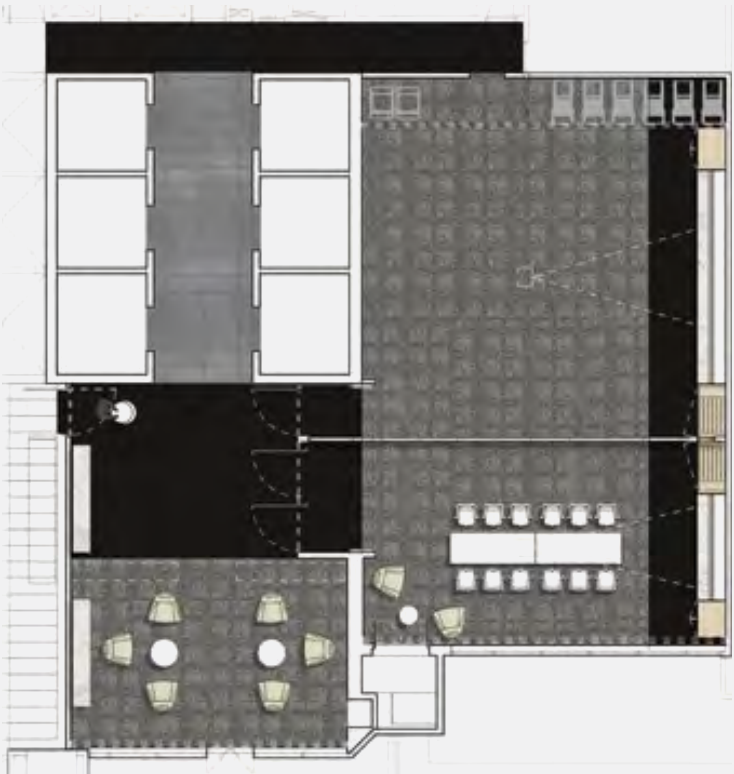
Classroom conference
27 seated

Theatrette boardroom
36 seated



Theatrette conference
54 seated

Theatrette boardroom
36 seated



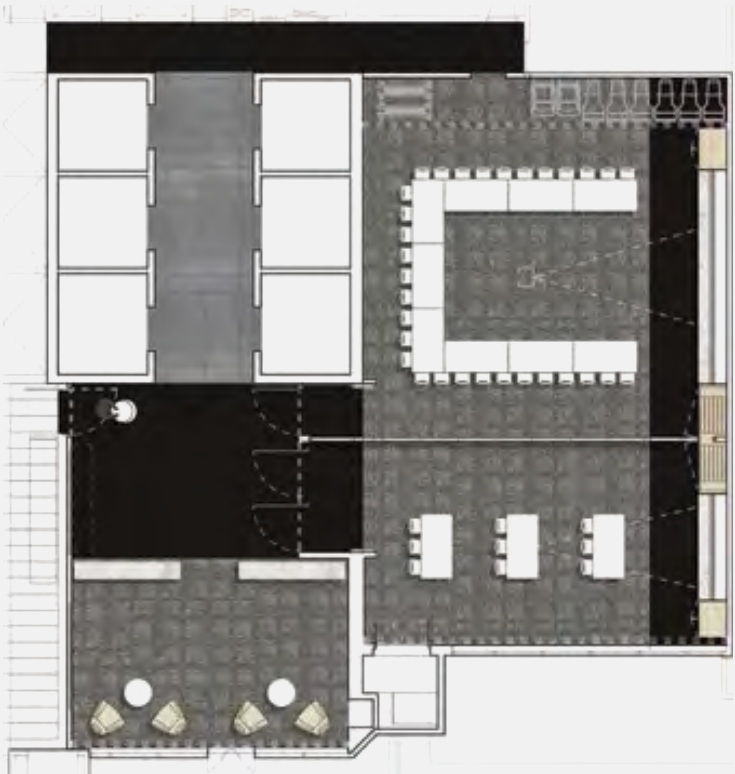
Open plan conference
80 standing

Boardroom
12 seated



Open plan conference
80 standing

Open plan boardroom
54 standing

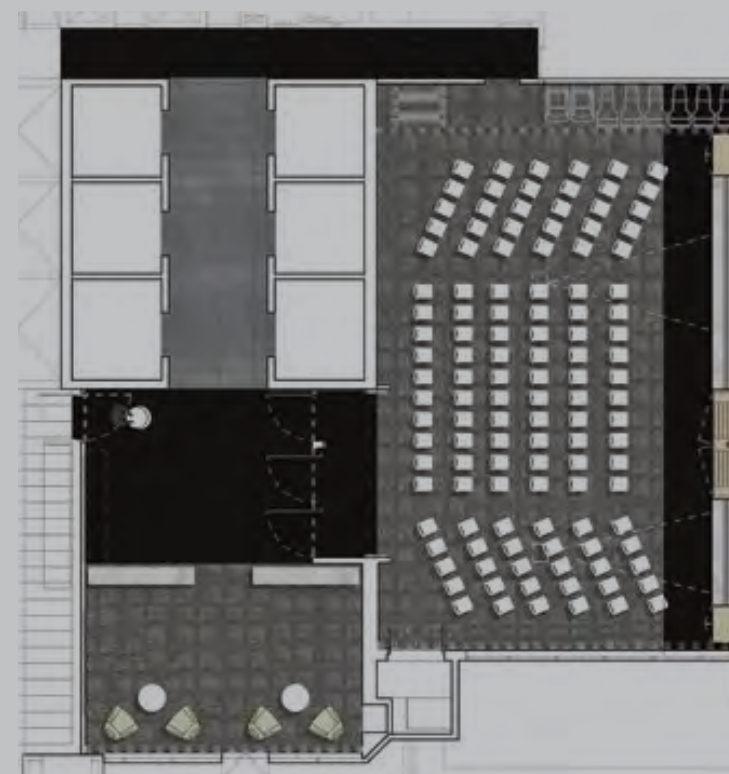


Training conference
31 seated

Classroom boardroom
9 seated



Open plan function centre
134 standing



Theatre function centre
114 seated



Classroom function centre
36 seated



Training conference
31 seated

Boardroom
12 seated



Training conference
31 seated

Open plan boardroom
54 standing



Classroom conference
27 seated

Classroom boardroom
9 seated



Equipment specs



Equipment specs

- Two Sony 98-inch 4K displays
- Computer device that acts as a Microsoft Teams endpoint using a room account in Microsoft Office (removes need to supply a laptop to call)
- Two Advanced PTZ cameras, one at the front to show audience participants and one at the rear to show the presenter, selectable during a conference.
- Ceiling microphones capture local voices.
- Ceiling mounted speakers for audio.
- Table top (or optional wall mount) 10-inch touch screen for call/presentation control.
- Wireless presentation receiver for cable-free sharing
- Cables at the cradenza allowing connection of laptops via HDMI for presentation and UC content.
- Single LCD display show both people and content in configurable layouts.
- Joinable to the Boardroom as the primary.



Exchange Tower, 2 The Esplanade, Perth WA



Functions at Exchange | 12



BOOK THE SPACE

Get in touch to book the function centre
or for existing Centuria tenants visit the
Orbit tenant app for more info.

concierge@exchangetower.com.au
+61 8 9421 9102

Centuria